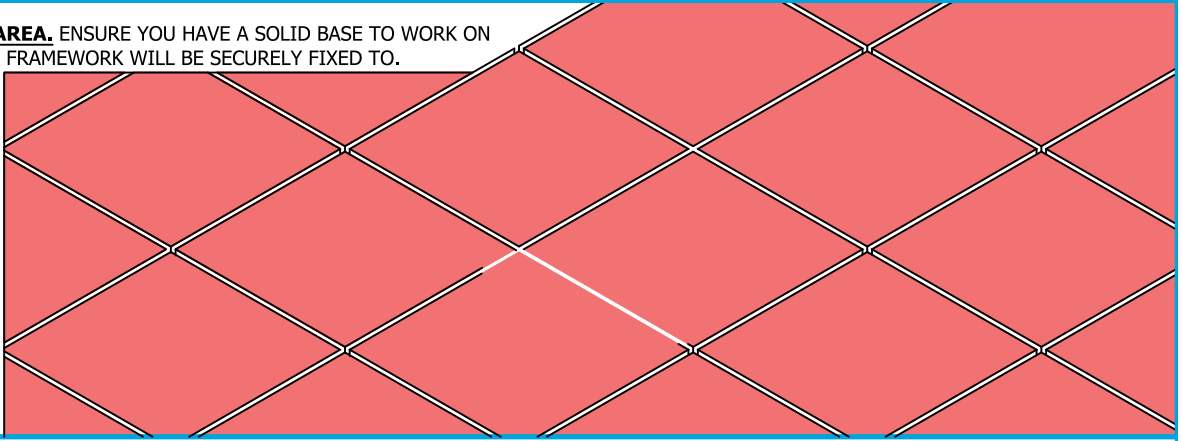


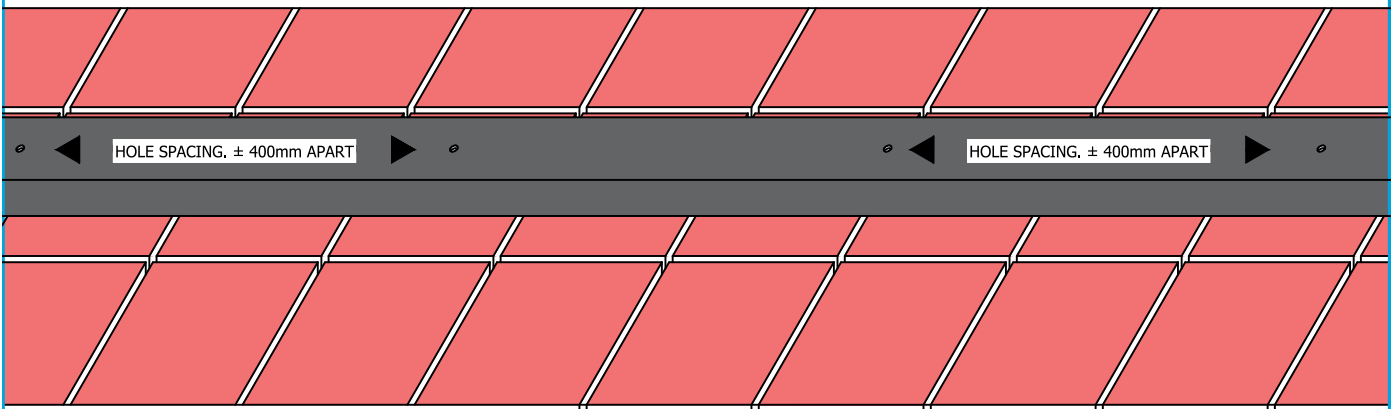
# CLADDING INSTALLATION INSTRUCTIONS : COMPOSITE SECTION SCREEN WALL

- 1 CLEAR THE AREA.** ENSURE YOU HAVE A SOLID BASE TO WORK ON WHERE YOUR FRAMEWORK WILL BE SECURELY FIXED TO.

TILED, CONCRETE OR  
PAVED AREA.

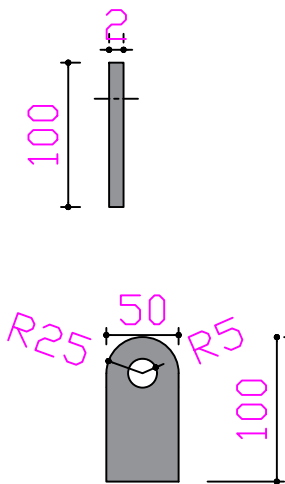


- 2 SECURE THE TUBING.** DRILL HOLES THROUGH 100x50 TUBING AND INTO THE SURFACE BELOW (IF THERE IS NO SOLID SURFACE BELOW, THIS WILL BE PROBLEMATIC). YOU WILL THEN NEED TO ROLL BOLT YOUR SECTION TO THE SURFACE BELOW AND ENSURE THAT IT IS SECURELY FIXED IN ITS POSITION. THE SAME STEPS ARE TO BE DONE AT THE TOP END OF THE COMPOSITE CLADDING.

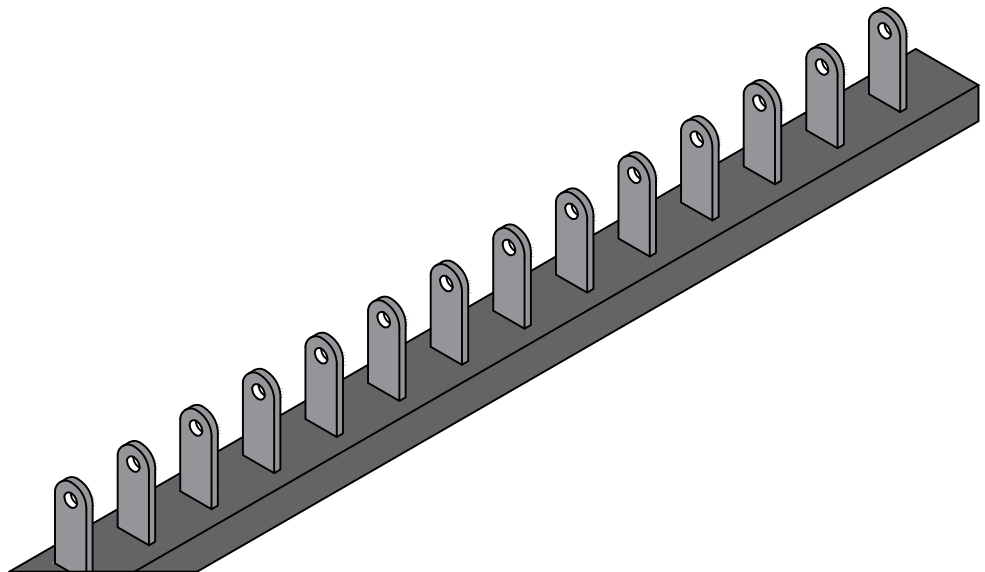


Drill 10/12mm Holes Through The  
Galvanized 100x50 tubing At ± 400mm  
Apart.

- 3 WELDING YOUR FIXING BRACKETS.** TO ENSURE THE COMPOSITE SECTIONS ARE FIXED PROPERLY, WE WELD ON A FIXING BRACKET AS SHOWN BELOW. THESE BRACKETS ARE TO BE WELDED ON THE EXACT POSITION OF EACH COMPOSITE SECTION. THE SAME IS TO BE DONE TO THE TOP END OF THE COMPOSITE CLADDING. THE BRACKETS COULD ALSO BE FIXED AT AN ANGLE IF REQUIRED.

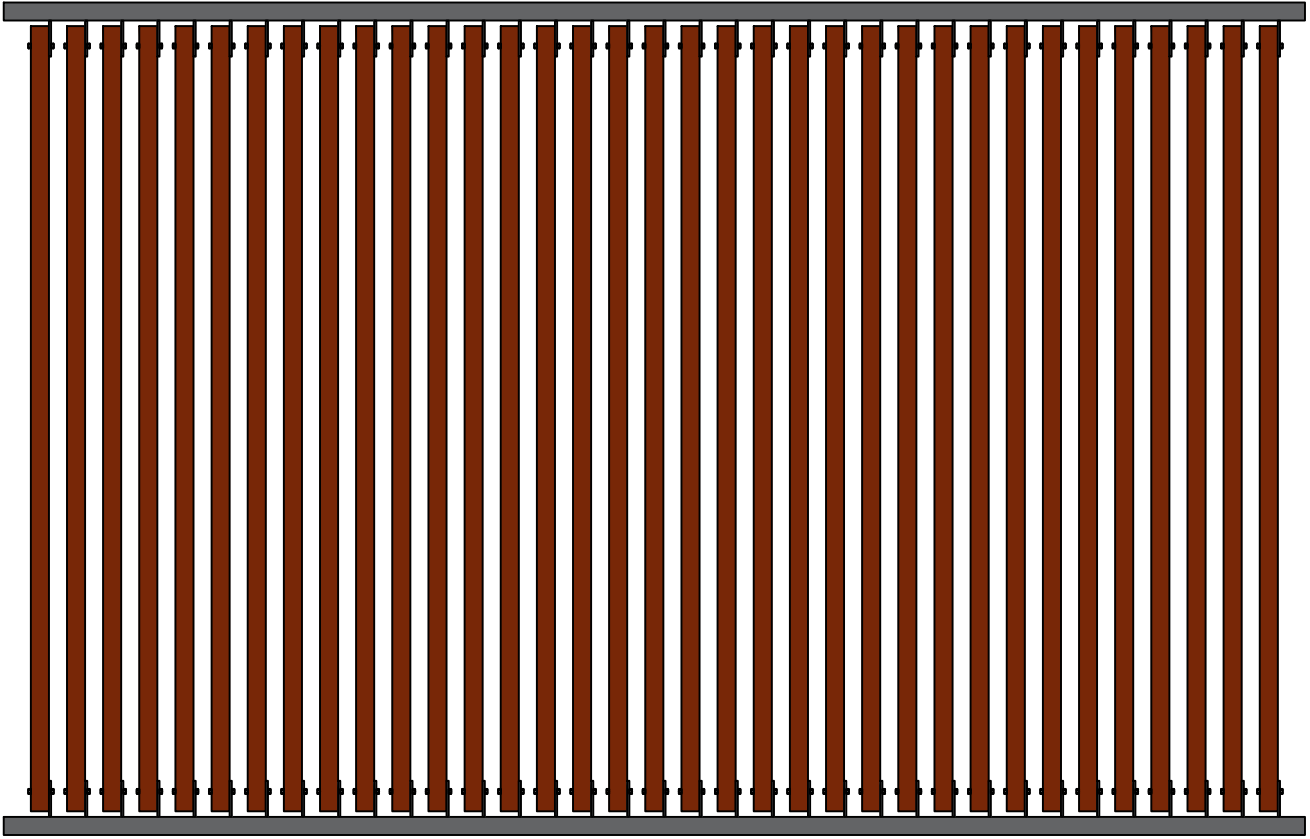


GALVANIZED STEEL FIXING BRACKETS

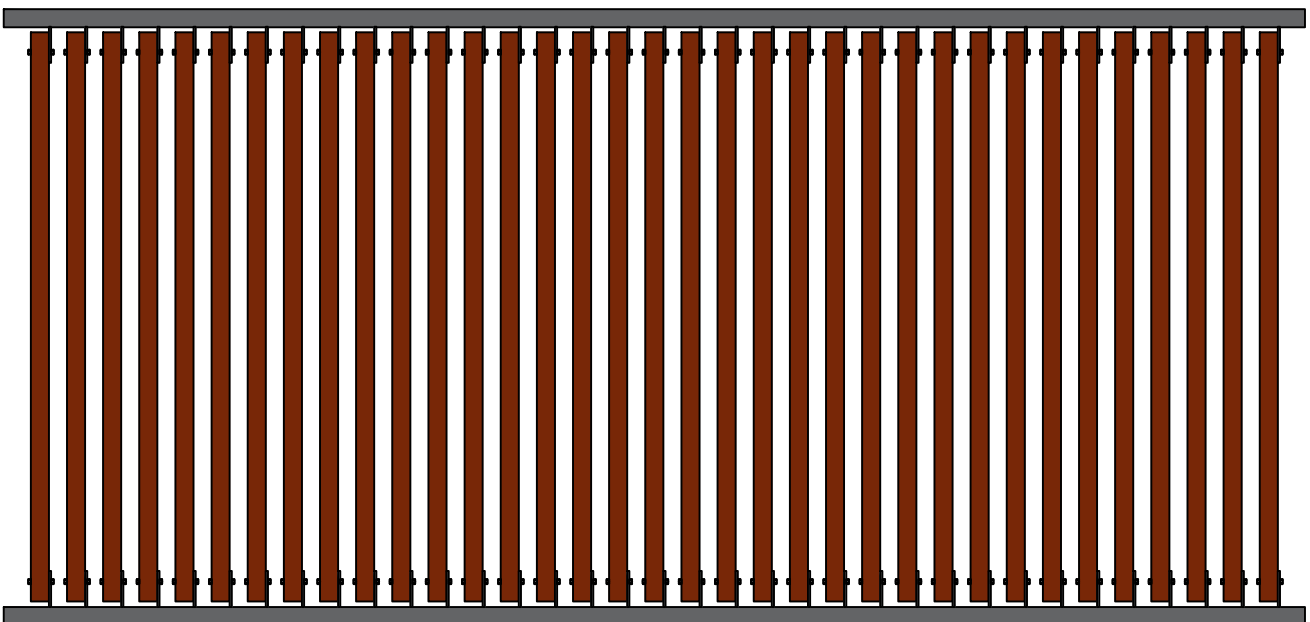


## CLADDING INSTALLATION INSTRUCTIONS : COMPOSITE SECTION SCREEN WALL

- 4 FIXING YOUR COMPOSITE SECTIONS.** DRILL HOLES THROUGH THE COMPOSITE SECTIONS AND ENSURE THAT ALL THE HOLES ARE AT THE SAME PLACE ON EACH SECTION. MOVE THE TREADED ROD THROUGH THE HOLES ON THE FIXING PLATE AND THE HOLES THROUGH THE COMPOSITE SECTIONS AND FASTEN IN PLACE.



- 5 ENSURING THAT EVERYTHING IS PROPERLY DONE.** TO FINISH THE INSTALLATION, IT IS ADVISABLE TO GO BACK TO EVERY BOLT AND WELD AND ENSURE THAT THEY HAVE BEEN PROPERLY FIXED AND SECURED. GIVE EVERY BOLT ANOTHER TURN AND PUSH ON EVERY COMPOSITE SECTION TO ENSURE THAT IT IS TIGHTLY FIXED AND CANNOT BE MOVED.



50 | 50  
50